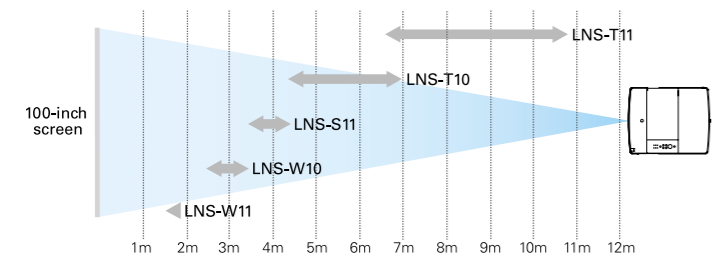


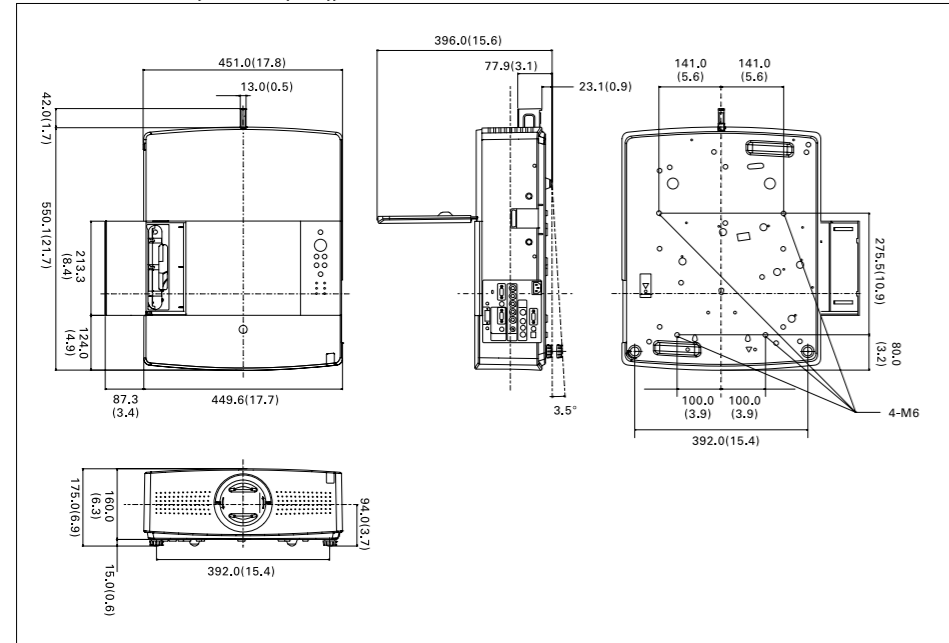
Major Options

Part Number	LNS-W11	LNS-W10	LNS-S11	LNS-T10	LNS-T11
Type	Wide Fixed Lens	Wide Zoom Lens	Standard Zoom Lens	Long Zoom Lens	Long Zoom Lens
Image					
Throw Distance	0.8 : 1	1.2 - 1.6 : 1	1.6 - 2.1 : 1	2.1 - 3.4 : 1	3.4 - 5.4 : 1
Focal Length	16.51 mm(0.7")	25 - 33 mm(1.0-1.3")	33 - 43 mm(1.3-1.7")	43 - 69 mm(1.7-2.7")	69.1 - 109.2 mm(2.7 - 4.3")
Lens Shift U/D	1 : 1	10 : 0 - 1 : 1	10 : 0 - 1 : 1	10 : 0 - 1 : 1	10 : 0 - 1 : 1
Lens Shift L/R	1 : 1	13 : 7 - 7 : 13	13 : 7 - 7 : 13	13 : 7 - 7 : 13	13 : 7 - 7 : 13
Motor Driven	No	Yes	Yes	Yes	Yes
F Value	2.3	2.3 - 2.6	1.7 - 2.1	2.0 - 2.6	2.1 - 2.52
Net Weight	1.0 kg(2.2 lbs)	0.95 kg(2.1 lbs)	0.825 kg(1.8 lbs)	1.0 kg(2.2 lbs)	1.1 kg(2.4 lbs)



Unit	LNS-W11		LNS-W10		LNS-S11		LNS-T10		LNS-T11	
	Fixed	Wide	Wide	Tele	Wide	Tele	Wide	Tele	Wide	Tele
40"	-	1.0(3.3)	1.3(4.3)	1.3(4.3)	1.7(5.6)	1.7(5.6)	2.8(9.2)	2.6(8.5)	4.3(14.1)	4.3(14.1)
60"	0.96(3.15)	1.5(4.9)	1.9(6.2)	2.0(6.6)	2.5(8.2)	2.5(8.2)	4.2(13.8)	4.0(13.1)	6.4(21.0)	6.4(21.0)
80"	1.29(4.23)	2.0(6.6)	2.6(8.5)	2.6(8.5)	3.4(11.2)	3.4(11.2)	5.6(18.4)	5.3(17.4)	8.6(28.2)	8.6(28.2)
100"	1.63(5.35)	2.5(8.2)	3.3(10.8)	3.3(10.8)	4.3(14.1)	4.3(14.1)	7.0(23.0)	6.7(22.0)	10.8(35.4)	10.8(35.4)
150"	2.48(8.14)	3.8(12.5)	4.9(16.1)	5.0(16.4)	6.5(21.3)	6.5(21.3)	10.6(34.8)	10.1(33.1)	16.3(53.5)	16.3(53.5)
200"	-	5.1(16.7)	6.8(21.7)	6.7(22.0)	8.7(28.5)	8.7(28.5)	13.1(43.0)	13.5(44.3)	21.7(71.2)	21.7(71.2)
250"	-	6.3(20.0)	7.6(24.9)	8.4(27.6)	10.0(32.8)	10.9(35.8)	13.1(43.0)	16.9(55.4)	27.2(107.0)	27.2(107.0)
300"	-	-	-	10.0(32.8)	-	-	13.1(43.0)	20.3(66.6)	32.6(107.0)	32.6(107.0)

External dimensions (unit: mm (inch))

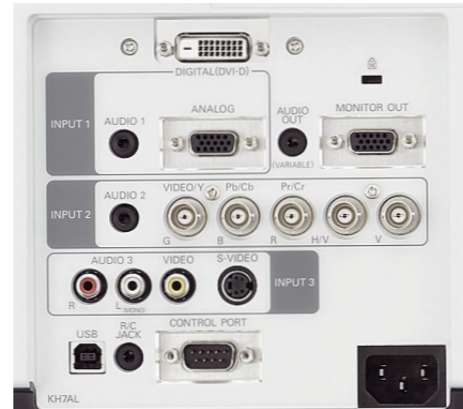


Specifications

Product Number	PLC-XTC50L	
System	RGB liquid crystal shutter protection system	
Optical System	Dichroic mirror separation / Prism synthesis system	
LCD Panel	Size	1.0 inch x 3, Aspect Ratio 4:3
	Drive System	Polysilicon TFT Active Iris
	Pixel Count	786,432 (1024 x 768) x 3 ; Total pixels 2,359,296
Pixel Array	Stripe	
Projection Lens	Lenses sold separately	
Light Source	330 W NSHA Lamp (1 lamp + 1 lamp)	
Screen Size (Projection Distance)	Minimum 30" - Maximum 300" (Projection distance differs by lens)	
Color Reproducibility	Full color (16.77 million colors)	
Brightness*1	5,000 lumens	
Uniformity	90 %	
Contrast Ratio*2 (Full On/ Full Off)	1,100:1	
Sound Output (Speakers)	3.0 W + 3.0 W Stereo Speakers (5 x 9 cm x 2)	
Scanning Frequency	Horizontal: 15-100 KHz, Vertical: 50-100 Hz, Dot Clock: 140 MHz or less (analog)	
Resolution (resizing) (When using RGB signal)	1024 x 768 (UXGA dot resizing possible)	
Terminals	PC Input/ Output	Analog RGB input x 1 ; Mini D-sub 15-pin x 1, BNC 5-type x 1 Digital video input (x 1) ; DVI-D x 1 Analog RGB output x 1 ; Mini D-sub 15-pin x 1 Audio input x 2 ; Stereo mini-jack x 2 (Computer/ Component)
	Video/ Audio Input/ Output	Video x 3 ; RCA input, BNC 3-type (same as PC input terminal), S-Video Audio input x 2 ; RCA-type x 2 Audio monitor output x 1 ; RCA (can be used with either computer or video)
	Controller input/ output, and other	Service port ; Mini DIN 9-pin x 1 (for service-use) USB Connector x 1 (B Series) Wired remote control port ; Mini-jack x 1 PJ Net Organizer Connector x 1
Operating Temperature	5 - 40 °C	
Power Source	AC 100 - 120 V, AC 200 - 240 V (±10 °C), 50/ 60 Hz	
Power Consumption	550 W, 440 W in "Eco1" lamp mode (Standby: approx 20 W)	
Dimensions (W x H x D)	451.0 x 175.0 x 550.1 mm (17.8 x 6.9 x 21.7 inch)	
Weight	14.7kg(32.4lbs)	
Main Accessories	Wireless remote control (AAA battery x 2), Removable power cord, USB cable, Computer cable, Owner's manual (Quick manual, CD-ROM), PIN code-locking seal	

Replacement Lamp type No: POA-LMP125(610 342 2626)
 *1 Brightness when using the LNS-S11 lens
 *2 Figures shown are as of the time of shipping, and listed in accordance with pattern for data projectors JIS X 6911:2003.
 Measurement method/measurement conditions are based on appendix 2.
 *Specifications as of November 6, 2008, subject to change.
 *All product names and company names are trademarks or registered trademarks of their respective companies.

Terminals



Think GAIA
For Life and the Earth

SANYO

XGA Multimedia Projector

PLC-XTC50L



All products manufactured by the Projector Division of SANYO's Digital System Company employ a quality management system that has undergone the inspection and registration process of the ISO 9001:2000 international standard.



SANYO's Digital System Company has received ISO 14001 certification for the environmental management system used in its factory.



<http://www.sanyo-lcdp.com/>

Caution: Please consult the instruction manual to ensure safe and proper operation of the product.

Distributed by:

SANYO

SANYO Electric Co., Ltd.
Digital System Company

© 2008 SANYO Printed in Japan 2008.12 St.
SML121

The Lamp Selection System Brings High Reliability

