



# TENSIONED COSMOPOLITAN® ELECTROL®

Automatic Electric Projection Screen Model

**DA-LITE SCREEN COMPANY, INC.**  
 3100 North Detroit Street  
 Post Office Box 137  
 Warsaw, Indiana 46581-0137  
 Phone: 574/267-8101  
 800-622-3737  
 Fax: 574/267-7804  
 http://www.da-lite.com  
 e-mail: info@da-lite.com

## SPECIFICATION DATA

**SUGGESTED SPECIFICATIONS:** \_\_\_\_\_ projection screen(s), \_\_\_\_\_ (H) x \_\_\_\_\_ (W), electrically operated 120 volt (60 Hz) 1.4 amp. To have Da-Mat, High Contrast Da-Mat, Pearlescent, Cinema Vision, High Contrast Cinema Vision, High Contrast Cinema Perf, Audio Vision, High Contrast Audio Vision, Da-Tex (Rear) or Dual Vision seamless surfaces with black masking borders standard on flame retardant and mildew resistant fabric mounted on 3-3/16" diameter rigid metal roller. Each side of the fabric to have tab guide cable system to maintain even lateral tension and hold surface flat. Custom slat bar with added weight maintains vertical tension on the screen surface. Shall have specially designed motor mounted inside the roller with a patented noise silencer, to be three wire quick reversal type, capacitor and an electric brake to prevent coasting. To have preset but adjustable limit switches to automatically stop picture surface in the "up" and "down" position. Case to be 22-gauge embossed steel, hexagon in shape with flat back to prevent scraping fabric. Finished in black enamel paint. Case end caps to be heavy duty, allowing no exposed roller pins, powder coated. Caps shall form sturdy brackets for wall or ceiling installation. To be complete with three position control switch in box with cover plate. Screen to be listed by Underwriters' Laboratories and CSA.



**All viewing surfaces will be seamless.**

**Audio Vision, High Contrast Audio Vision and High Contrast Cinema Perf available in sizes up to 69" x 92" in Video Format and 65" x 116" in HDTV Format.**

### SQUARE FORMAT

Sizes		Overall Length		Between Hanger Eyes		Overall Length of Slat		Approx. Shipping Wt.	
In.	Cm	In.	Cm	In.	Cm	In.	Cm	Lbs.	Kg
50" x 50"	127 x 127	69"	175	67-1/2"	172	60-1/4"	153	54	24.50
60" x 60"	152 x 152	80"	203	78-1/2"	199	71-1/4"	181	61	27.67
70" x 70"	178 x 178	91-1/2"	232	90"	229	82-3/4"	210	68	30.85
84" x 84"	213 x 213	108"	274	106-1/2"	271	99-1/4"	252	76	34.47
6' x 8'	183 x 244	118"	300	116-1/2"	296	109-1/4"	277	83	37.65
8' x 8'	244 x 244	121-1/2"	309	120"	305	112-3/4"	286	85	38.56
7' x 9'	213 x 274	132"	335	130-1/2"	332	123-1/4"	313	97	39.46
9' x 9'	274 x 274	130-1/2"	332	129"	328	121-1/4"	309	90	40.82
8' x 10'	244 x 305	145-1/2"	370	144"	366	136-3/4"	347	101	45.81
10' x 10'	305 x 305	142-1/2"	362	141"	358	133-3/4"	340	109	49.44
9' x 12'	274 x 366	166-1/2"	423	165"	419	157-1/4"	399	119	53.98

### VIDEO FORMAT

Sizes		Nominal Diagonal		Overall Length		Between Hanger Eyes		Overall Length of Slat		Approx. Shipping Weight	
In.	Cm	In.	Cm	In.	Cm	In.	Cm	In.	Cm	Lbs.	Kg
43" x 57"	109 x 145	72"	183	75"	191	73-1/2"	187	66-1/4"	168	59	26.76
50" x 67"	127 x 170	84"	213	86"	218	84-1/2"	215	77-1/4"	196	65	29.48
60" x 80"	152 x 203	100"	254	100"	254	98-1/2"	250	91-1/4"	231	74	33.57
69" x 92"	175 x 234	120"	305	114"	290	112-1/2"	286	105-1/4"	267	83	37.65
87" x 116"	221 x 295	150"	381	141"	358	139-1/2"	354	132-1/4"	335	101	45.81
108" x 144"	267 x 356	180"	457	166"	422	164-1/2"	418	157-1/4"	400	119	53.98
120" x 160"	305 x 406	200"	508	183"	465	181-1/2"	461	174-1/4"	443	131	59.42

### HDTV FORMAT

Sizes		Nominal Diagonal		Overall Length		Between Hanger Eyes		Overall Length of Slat		Approx. Shipping Weight	
In.	Cm	In.	Cm	In.	Cm	In.	Cm	In.	Cm	Lbs.	Kg
45" x 80"	114 x 203	92"	234	98-1/2"	250	97"	206	89-3/4"	660	65	29.48
52" x 92"	132 x 234	106"	269	111"	282	109-1/2"	278	102-1/4"	260	72	32.66
58" x 104"	147 x 264	119"	302	124"	315	122-1/2"	311	115-1/4"	293	83	37.65
65" x 116"	165 x 295	133"	338	137"	348	135-1/2"	344	128-1/4"	326	101	45.81
78" x 139"	201 x 353	159"	404	162"	412	160-1/2"	408	153-1/4"	389	119	53.98

Extra drop may alter dimensions. Contact Da-Lite for details.

Overall case length dimensions ± 1/4".

Specifications subject to change without notice.

All screens standard with 12" black drop at the top except 200" diagonal which has 4".

**NOTE:** Letterbox formats available upon request.

**WHEN ORDERING, MARK APPROPRIATE SELECTIONS:**

**Select size from charts on the other side.**

**Select viewing surface:**

- Da-Mat™
- Cinema Vision
- Da-Tex (Rear)
- High Contrast Da-Mat™
- High Contrast Audio Vision
- Pearlescent
- Audio Vision
- Dual Vision
- High Contrast Cinema Vision
- High Contrast Cinema Perf

**Options:**

- Floating Mounting Bracket.
  - Allows the screen to be mounted either on the wall or ceiling at most secure position. Releasing two set screws, the screen can then be moved left or right for proper centering on the wall or alignment to projector.
  - Retrofit Capabilities.
  - Available in black or white.
- Single Motor Low Voltage Control System - 3 Button.
- Wireless Remote Control for L.V.C. system.
  - Radio Frequency Remote.
  - Infrared Remote.
- Locking Switch Cover Plate for 120V or 3-Button Switch.
- Key Operated Switch for 120V only (NOTE: Cannot be used with low voltage system).
- 220 Volt (50 Hz) Motor.

Project: \_\_\_\_\_

Architect: \_\_\_\_\_

Phone: \_\_\_\_\_

Contractor: \_\_\_\_\_

Phone: \_\_\_\_\_

Supervisor: \_\_\_\_\_

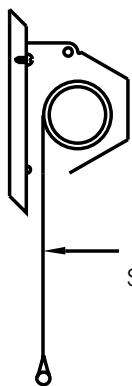
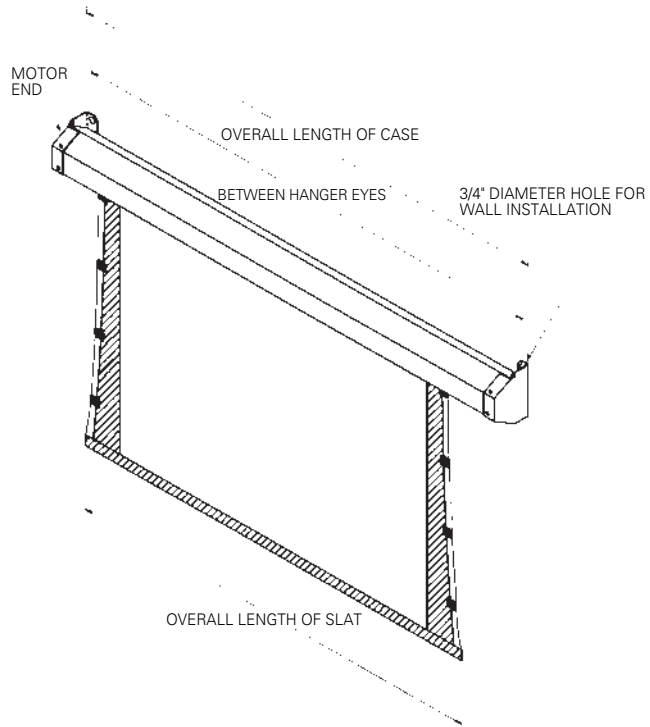
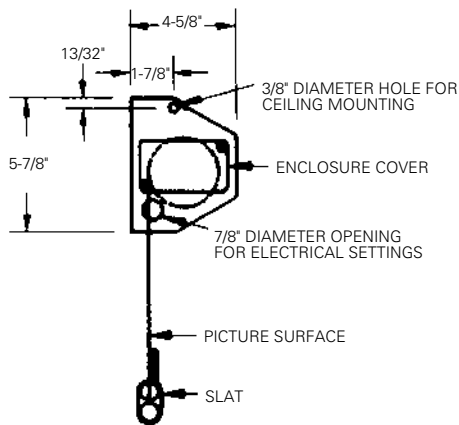
Phone: \_\_\_\_\_

Date: \_\_\_\_\_

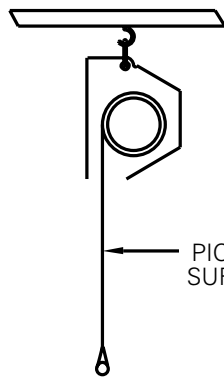
Revised: \_\_\_\_\_

- Video Projector Interface Control - 12V or 5V.
- External SCB-100 - RS-232 Serial Control Board
  - NET-100 Ethernet-Serial Adapter
  - MNC-100 Master Network Controller Software

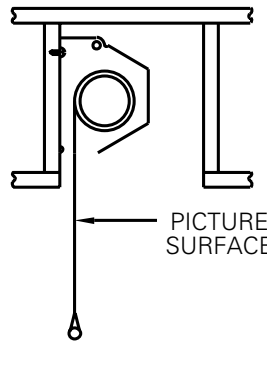
**SUGGESTED METHODS OF INSTALLATION**



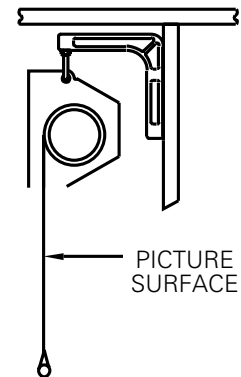
**WALL MOUNTED**



**CEILING MOUNTED**



**CONCEALED**



**USE No. 6 BRACKETS TO HANG BEHIND BEAM OR VALANCE**